



**WIARTON KEPPEL
INTERNATIONAL
AIRPORT** N44° 44' 39"
W81° 06' 31"

Airport Partnership Feasibility Meeting

October 18, 2018

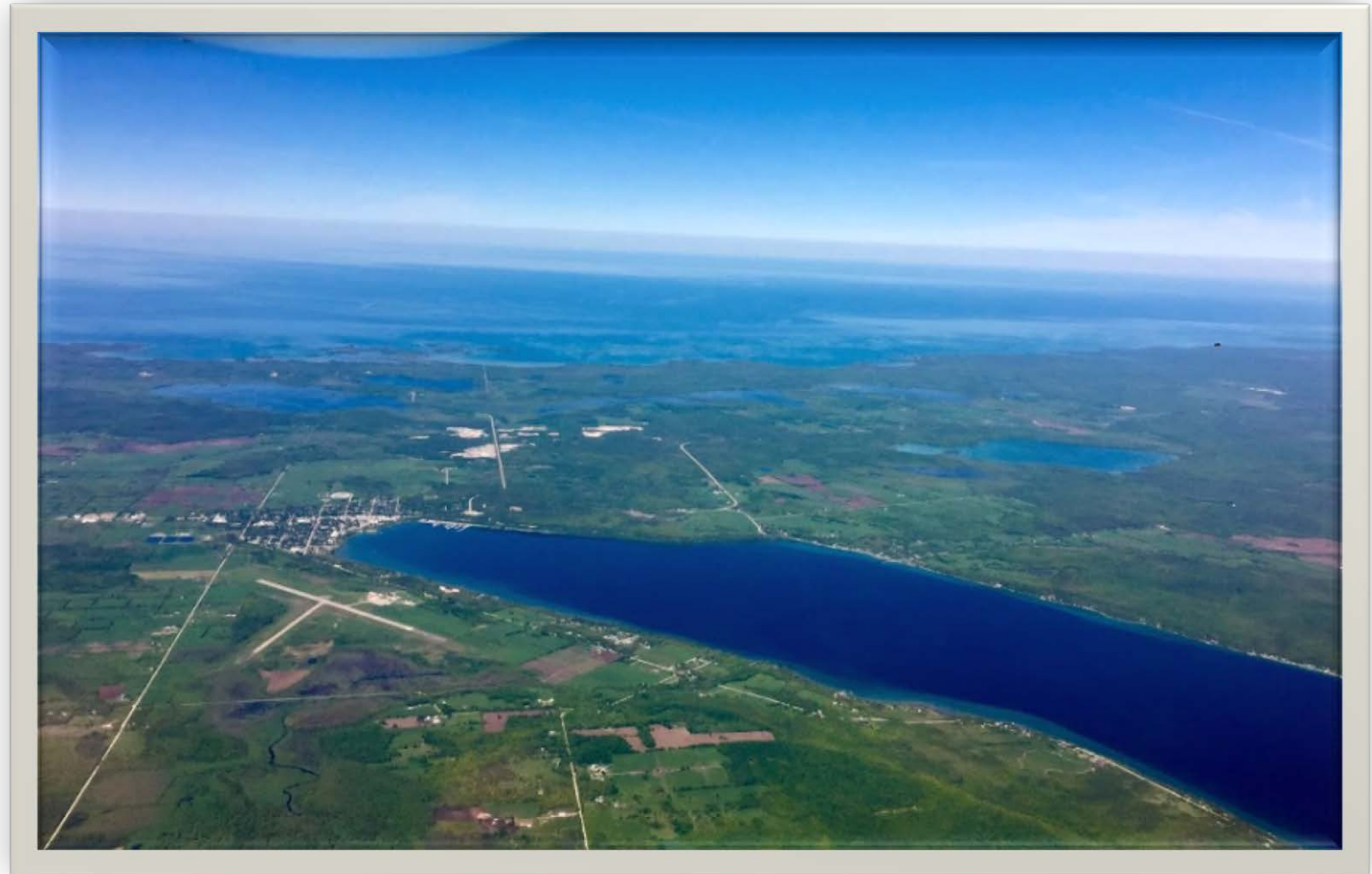


Welcome!

▶ Introductions

Location & Land Base

- ▶ 2.5 km east of Town of Wiarton
- ▶ Property comprises of 800+ acres
- ▶ Public access from Grey Road 1



Airport Features

- ▶ Primary Runway 5033 x 150 Asphalt
- ▶ Secondary Runway 3456 x 100 Gravel
- ▶ Public Apron
- ▶ 8 Private Hangars



Airport Features

- ▶ Open 24 hours per day, 7 days per week
- ▶ Canada Customs – Airport of Entry (AOE/15)
- ▶ Owned and operated by Twp of Georgian Bluffs



Vision

To become the Grey Bruce region's aviation hub offering exceptional service to leisure, corporate, business and recreational users.



History: Birth of the Airport

- ▶ Late 1940's opened as an emergency strip on trans-Canada air route
- ▶ Originally operated two 4,100 foot runways and a radio range station
- ▶ Primary Rwy 05-23 was paved in 1952, and extended to 6,000 feet in 1954 to accommodate larger planes. Later refurbished and reduced to 5,000 feet.

History of Ownership

- ▶ In 1996, Wiarton Airport was transferred to Town of Wiarton and Township of Keppel
- ▶ In 2015, South Bruce Peninsula council and Township of Georgian Bluffs council reached an agreement over the sale of the Wiarton Keppel International Airport, making Georgian Bluffs the new owners.



Transports
Canada

Transport
Canada

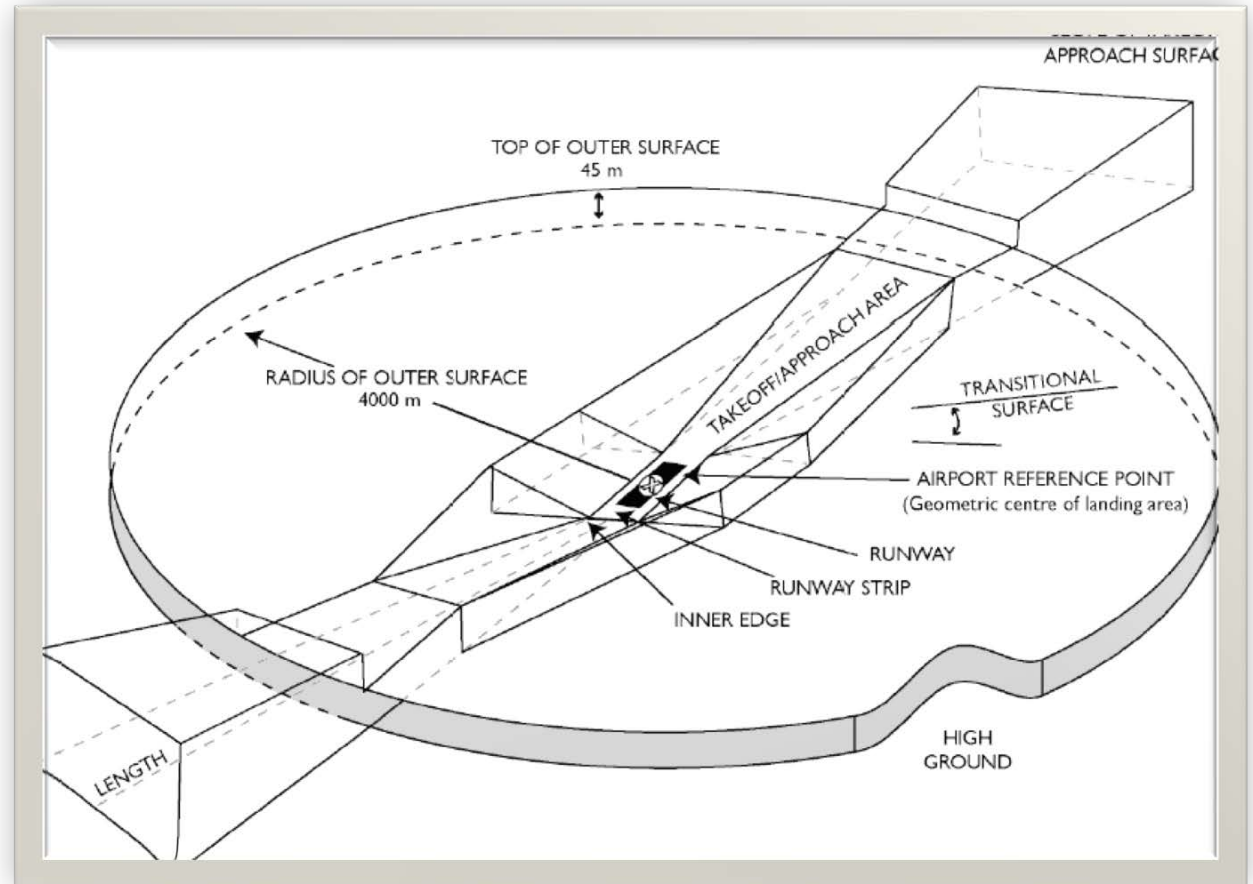
Airport Operations

- ▶ Uncontrolled Airport with Mandatory Frequency (MF)
- ▶ GPS approaches available for primary runway
- ▶ LPV Approach(Localizer Performance with Vertical Guidance) in May 2019
- ▶ Staffed Hours 08:30 – 17:00 daily (available on Callout)
- ▶ Fuel sales and services managed by Township



Airport Zoning

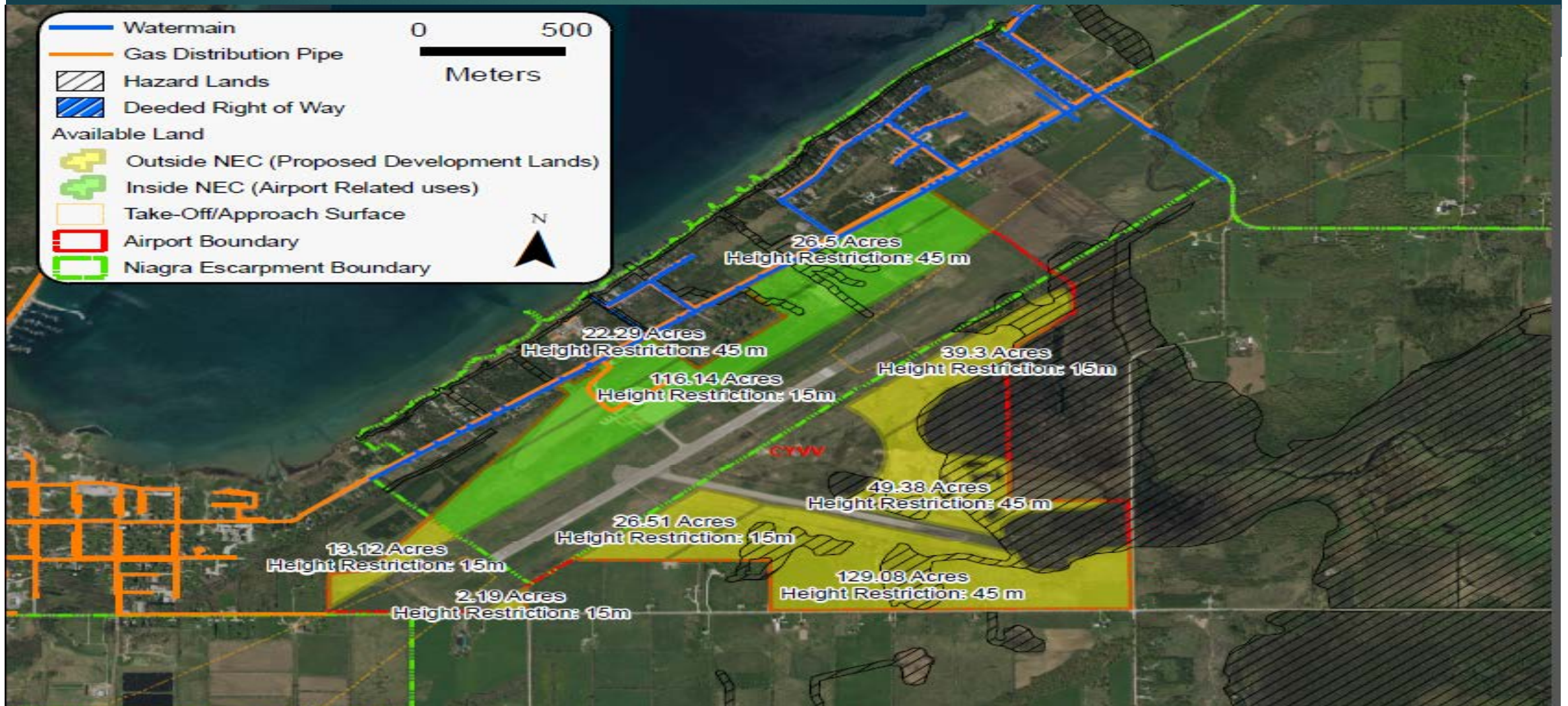
- ▶ Extensive zoning in place since 1986 (Federal)Aeronautics Act
- ▶ Incorporates areas as far away as Sauble Beach
- ▶ Would limit the height of new buildings, structures, and objects, including trees, or any additions to existing buildings, structures, and objects on lands adjacent to or in the vicinity of airport



Airport Designation

- ▶ Transport Canada “Certified” Airport – Only airport in Grey Bruce region
- ▶ Declared “Recovery Airport” by Nav Canada due to superior infrastructure
- ▶ Canada Customs Port of Entry (Seasonal, May - October)

Airport Site & Potential Development



Areas for Development

- ▶ Recreational use
- ▶ Business & Aviation Related Use
- ▶ Tourism Charter Flights
- ▶ Scheduled Flights

Recreational Use

CYVV Facts

- ▶ Aircraft Movements up by 170 percent in 2018
- ▶ Fuel Sales up by 48 percent in 2018



Business & Aviation Related Uses

- ▶ Aircraft Maintenance & Repair facilities
- ▶ Aviation training facilities
- ▶ Airline, air charter, air cargo and courier operations
- ▶ Helicopter operations and services
- ▶ Aviation related offices, retail, restaurant and personal services
- ▶ Warehouse, storage and courier operations
- ▶ Public rental parking and car rental operations
- ▶ Hotels and motels

Charter Flights

CYVV Facts

- ▶ 16 charter flights operated in August 2018
- ▶ Direct Flights from Canada, US & Europe



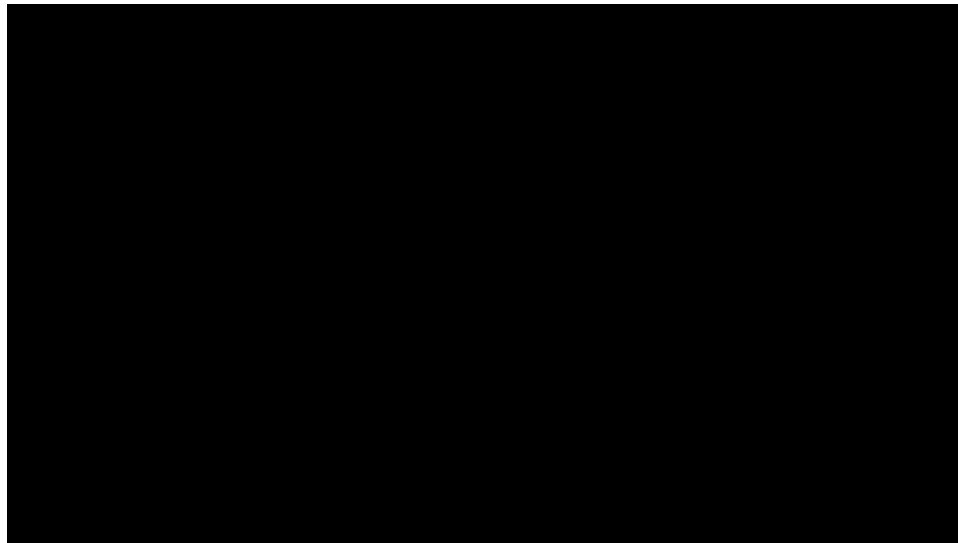
Scheduled Flights

- ▶ Township working to secure scheduled flights between Wiarton and Toronto
- ▶ Partnership with Grey County & ThinkCompass
- ▶ Passenger Service Survey conducted in February 2018 received a massive response (discussed later)

FLYGTA Example – Air Taxi Operator

- ▶ FlyGTA provides scheduled flights from Toronto to Niagara, Waterloo, Barrie, Muskoka, and is expanding
- ▶ Tops the Ontario market in aerial tours and daycation packages
- ▶ NO LINES, NO WAITING, STRESS FREE experience

Daycation Tour Example



https://www.youtube.com/watch?time_continue=61&v=V1-1NTIRHiE

Passenger Service Survey 2018

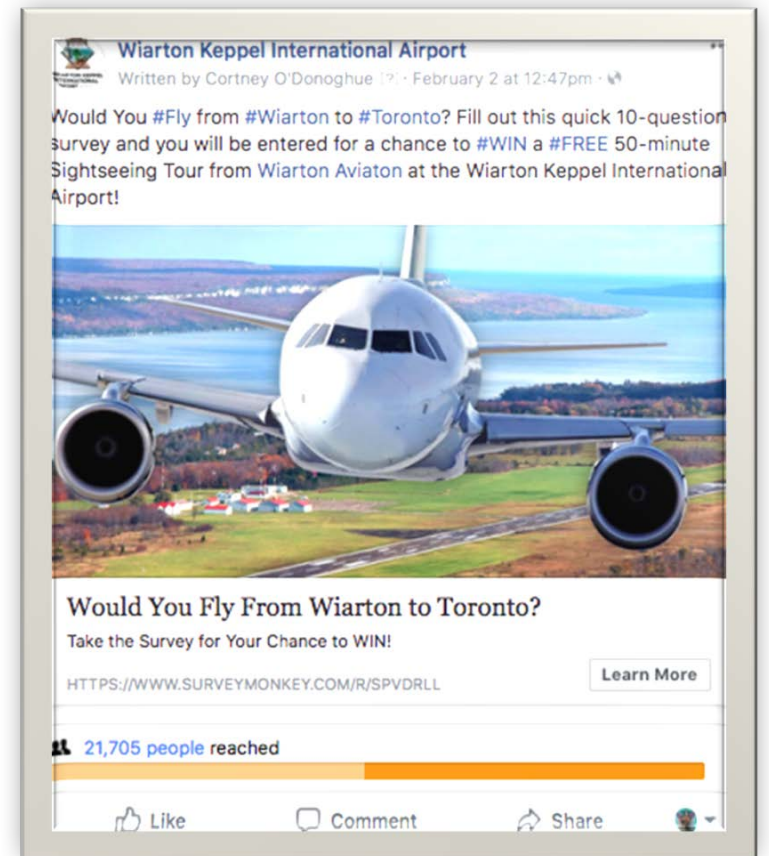
- ▶ Conducted in consultation with Grey County, Think Compass and Georgian College
- ▶ Reached 20,000+ people just on Facebook
- ▶ 2300+ survey responses

RJ Eldred I certainly would consider it.

There are real benefits to leaving from Wiarton and leaving car there. What airport would it fly into? How many scheduled trips per day?

Jennifer Whitelock Absolutely! I think it is a fantastic idea to have an alternative option when it comes to traveling to/from Wiarton and the surrounding area. Especially as tourism rates in the Grey Bruce area continue to grow!

Lori Wilhelm Living near Lions Head and travelling for work to Montreal and Toronto on a monthly basis I would definitely fly out of Wiarton if the price and schedule is right. I have done the survey and look forward to seeing the results.



Survey Report

- ▶ Almost all respondents travel to Toronto at least once per year, for either business or leisure
- ▶ Two-thirds of respondents indicated they were extremely or very likely to fly from the Warton International Airport to one of the destinations they visit
- ▶ Half of respondents (48%) indicated they would be willing to pay \$100-\$199 for a return flight to Toronto from the Warton International Airport

Questions?

